

國立陽明交通大學

NATIONAL YANG MING CHIAO TUNG UNIVERSITY

AY2021/2022



Program Guidelines

Office of International Affairs

Updated: Oct.2021



Office of International Affairs (OIA)



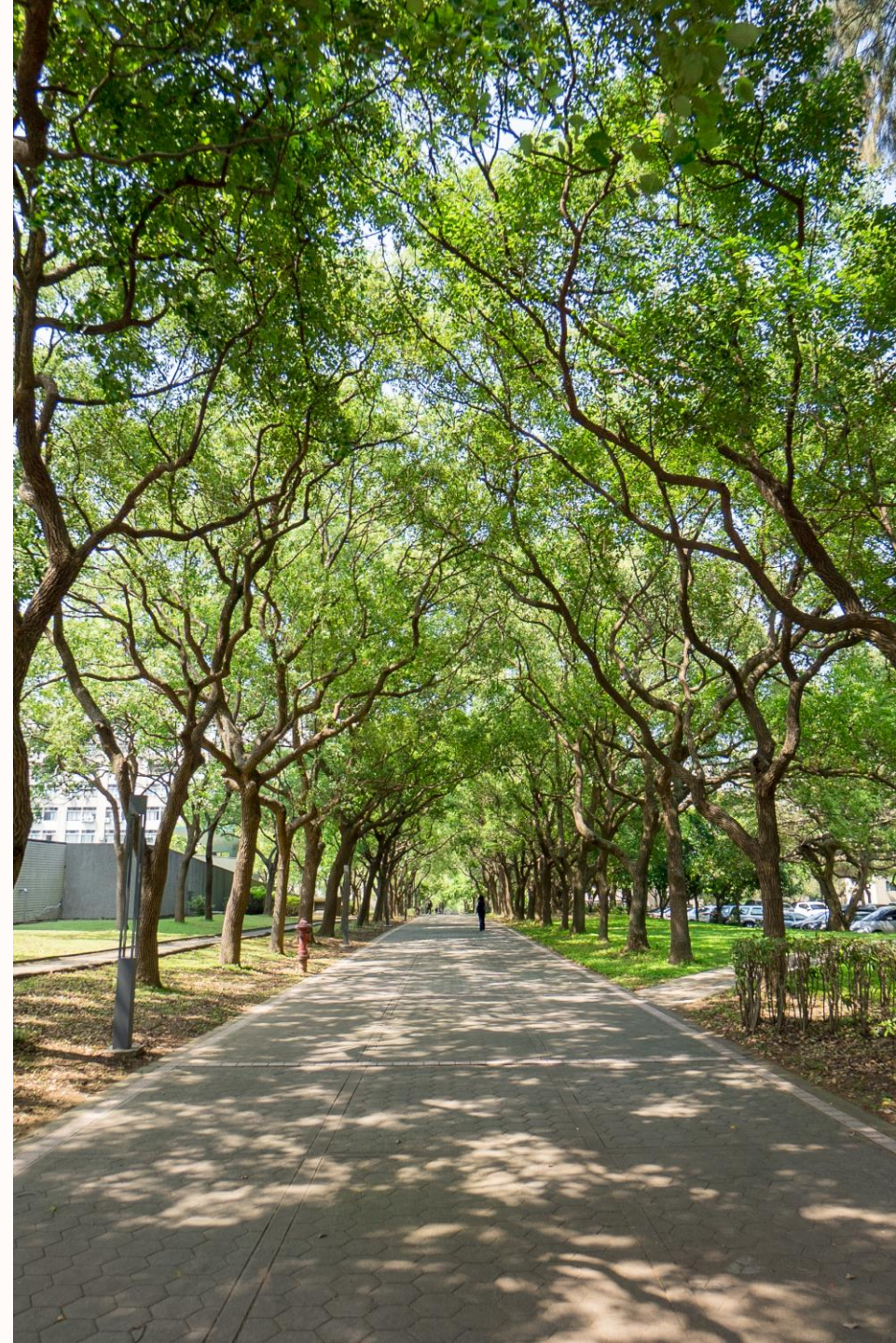
Contact Information

Inbound Student Exchange

- Ms. Lily Cheng (Chiaotung Campus)
- lilycheng@nycu.edu.tw
- Ms. Ina Huang (Yangming Campus)
- yyyhuang@nycu.edu.tw

Exchange Student Services

- Ms. Iris Chuang (Chiaotung Campus)
- irischuang@nycu.edu.tw
- Ms. Meggy Niu (Yangming Campus)
- meggyniu@nycu.edu.tw





Facts about NYCU

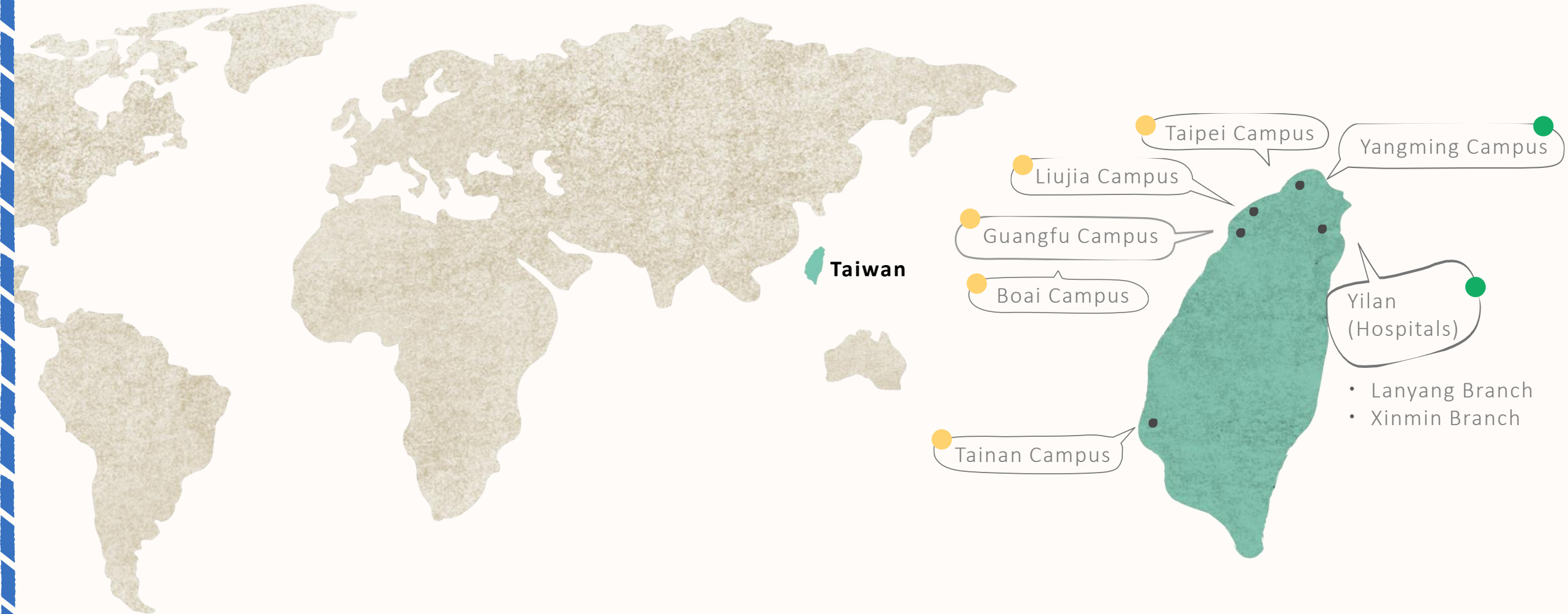


National Yang Ming University (hereinafter referred to as Yang Ming) and National Chiao Tung University (hereinafter referred to as Chiao Tung) formally merged into National Yang Ming Chiao Tung University (NYCU) on February 1, 2021. Yang Ming, which focuses on biomedical research, and Chiao Tung, which focuses on electronic communication research, are both top tier universities in Taiwan. The merger will eventually bring forth a great and innovative university that is second to none, with 1,400 teachers and 17,000 students collaborating to create a great generation that will develop and further Taiwan's emerging smart medical industry.

陽明交大
NYCU

Campus Map

● Chiaotung Campus ● Yangming Campus



NYCU at a Glance

Key Figures and Rankings

Rankings (By subjects)

#117 Engineering - Electrical & Electronic

#129 Computer Science & Information Systems

#139 Engineering & Technology


#101-150 Nursing

#151-200 Medicine


Chiaotung Campus

 Students
15,182

5,905 Undergraduates
9,277 Graduates

 Faculty
1,271

Yangming Campus

 Students
4,851

2,209 Undergraduates
2,642 Graduates

 Faculty
1,083

19 Colleges

- Guangfu Campus
- Yangming Campus
- Other Campuses

Computer Science



Electrical & Computer Engineering



Engineering



International Semiconductor Technology



Law



Science

Artificial Intelligence
(Tainan Campus)



Biological Science & Technology
(Boai Campus)



Hakka Studies
(Liuja Campus)



Management
(Guangfu & Taipei Campus)



Photonics
(Tainan Campus)

Humanities & Social Sciences

Biomedical Science & Engineering



Dentistry



Life Sciences



Medicine



Nursing



Pharmaceutical Sciences



Inbound Exchange Program





Introduction

NYCU offers inbound international students with an opportunity for academic and cultural immersion.

Types	Remarks	How to apply
Inbound Exchange Program	Students enrolled (or matriculated) at partner institutions and nominated by coordinators of home institutions.	The nomination link will be email to partner institutions' coordinator in every nomination period. The link is different in each semester.
Inbound Visiting Program (fee-paying exchange)	Students enrolled at partner institutions but not officially nominated by home institution; or, students from non-partner institutions.	Students apply directly via the online application system in the application period.

Important Dates for Exchange Program

Application timeline

Students may choose to exchange for one semester or one academic year.

*Academic year at NYCU begins in September; full academic year exchange can only begin in Fall Semester.

Semester	Nomination Deadline	Application Deadline
Fall Semester (Sep. to Jan.)	March 30 th	April 15 th
Spring Semester (Feb. to Jun.)	September 30 th	October 15 th

*The confirmed academic calendar will be announced around late June each year.



Short-term Research/ Internship Program



Program Introduction

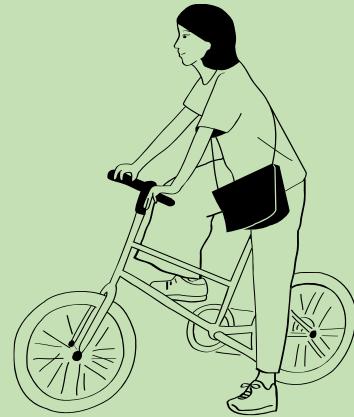
Types	Remarks	How to apply
Short-term Research Program	Current students from international academic institutions who wish to do research in NYCU.	Please refer to OIA website, and search for "Short-term Research Program".
Short-term Research Scholarship	Current <u>postgraduate</u> or <u>senior undergraduate</u> students in Specific Partner Institutions .	Please refer to OIA official website, and search for "Short-term Research Scholarship".
Short-term Internship Program (Yangming campus only)	Current students from international academic institutions who wish to do internship in NYCU.	Please contact the coordinator at Yangming campus for more information.



OIA website



Student Services



Division of Overseas Student Affairs is part of the Office of International Affairs, and is established to offer on-site services, such as accommodation, insurance, visa, registration and other student needs. Furthermore, International student society, host-family arrangement, and international student emergency are taken care of by them as well.





Orientation

The orientation will be held at the beginning of each academic semester. It will introduce NYCU to new international students and covers important and helpful topics.

Free Chinese Courses

- One-on-one tutoring
- Chinese Cultural Salon: Cultural experience courses
- Courses range from introductory to advanced levels (4 levels)
- Elective courses focusing on useful situational conversations



NYCU Chinese Language Program, LTRC

National Yang Ming Chiao Tung University

